

What is the Flint Creek Nature Center?

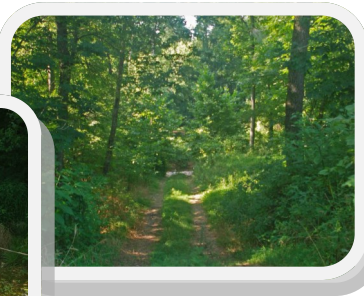
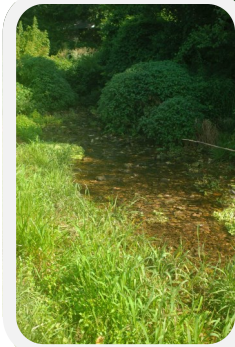
The Flint Creek Nature Center is located on Dawn Hill West Road, 1/2 mile west of AR Highway 59. It is owned and operated by the City of Gentry.

The Nature Center features over 100 native species of trees, plants, vines, shrubs, pollinators, birds, mammals and fish.

In addition to the diverse plant and animal species, it has direct access to Flint Creek which adds species of plant and aquatic life including macro-invertebrates and crustaceans.

The Flint Creek Nature Center offers community education and recreational activities free of charge.

Classrooms and families are welcome to take advantage of the natural treasure and the enhanced education opportunities it provides.



**For more
information or to
request
educational materials, please
contact the City of Gentry or
Gentry Chamber of Commerce.**

City of Gentry
101 West Main
Gentry, AR 72734
(479) 736-2358
gentrycityhall@cox-internet.com
www.gentryonline.us

Gentry Chamber of Commerce
Bev Saunders, Executive Director
212 East Main
P.O. Box 642
Gentry, AR 72734
(479) 736-2358
info@gentrychamber.com
www.gentrychamber.com

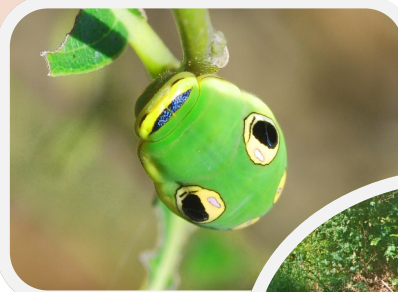


Flint Creek Nature Center

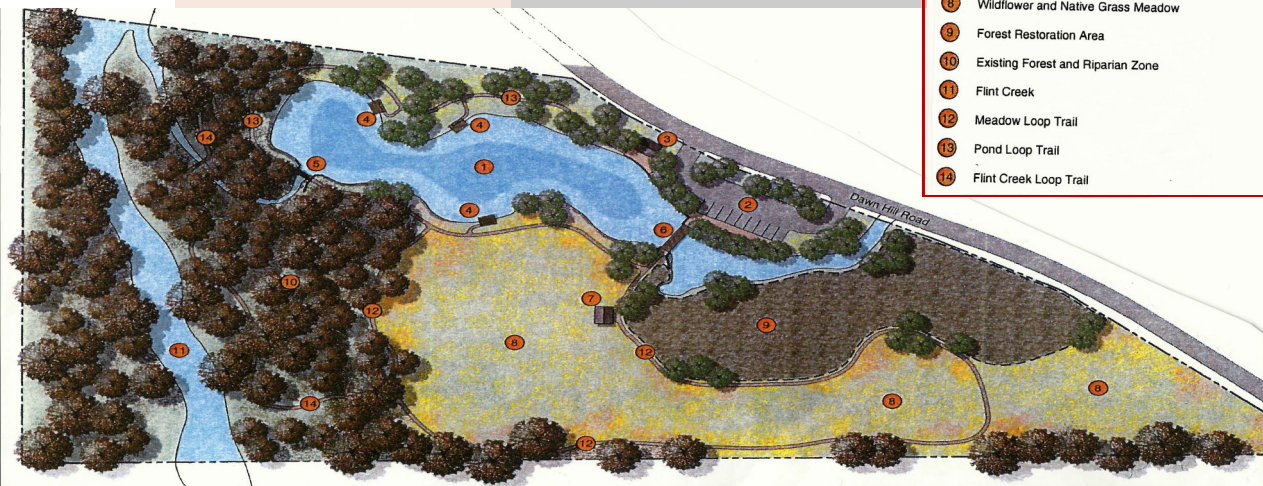
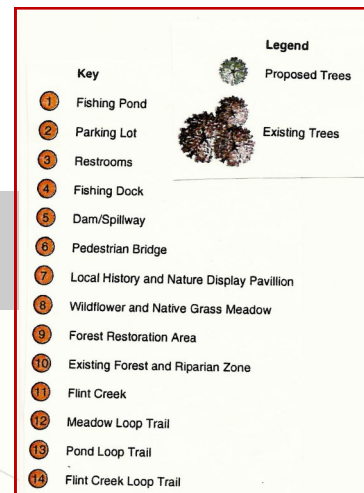
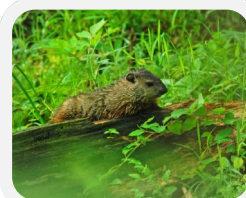


Gentry, Arkansas

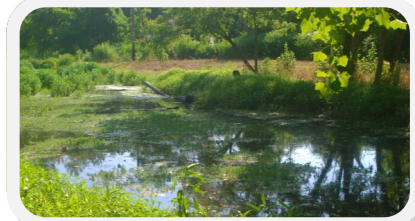
Photos of Flint Creek Nature Center



**Photos by
Terry Stanfill**



Community Fishing Pond



There will be a community fishing pond. This pond is a cooperative effort between the City of Gentry and the Arkansas Game and Fish Commission.

The pond will be stocked with fish including various bass and catfish species.

In addition, the pond will be full of several species of aquatic plant and animal life including phytoplankton and zooplankton. The diversity and species interactions will also provide visiting classrooms additional educational opportunities.

