

GENTRY WALK/BIKE ACTION PLAN

OVERVIEW

Gentry has a population of 3,298 and covers 4.3 square miles in western Benton County. The largest population center in western NWA, Siloam Springs, lies eight miles to the southwest, with Decatur six miles to the north. Directly east is XNA Airport (12 miles), Cave Springs (16 miles) and the urban NWA corridor (20 miles). Not only are there opportunities for improved connectivity to Siloam Springs and other parts of NWA, but there are also opportunities to provide connections between the high school area (all Gentry schools to be located here in the future), the downtown area, library, and public lands such as the developing Flint Creek Nature area.

Regional Destination

- » Downtown

Other Key Destinations

- » Flint Creek Nature Area
- » Gentry High School
- » Wild Wilderness Safari
- » Library
- » Grocery store: Walmart Express on AR 59
- » City Park
- » Eagle Watch Nature Trail
- » Ballfields on Byers Avenue

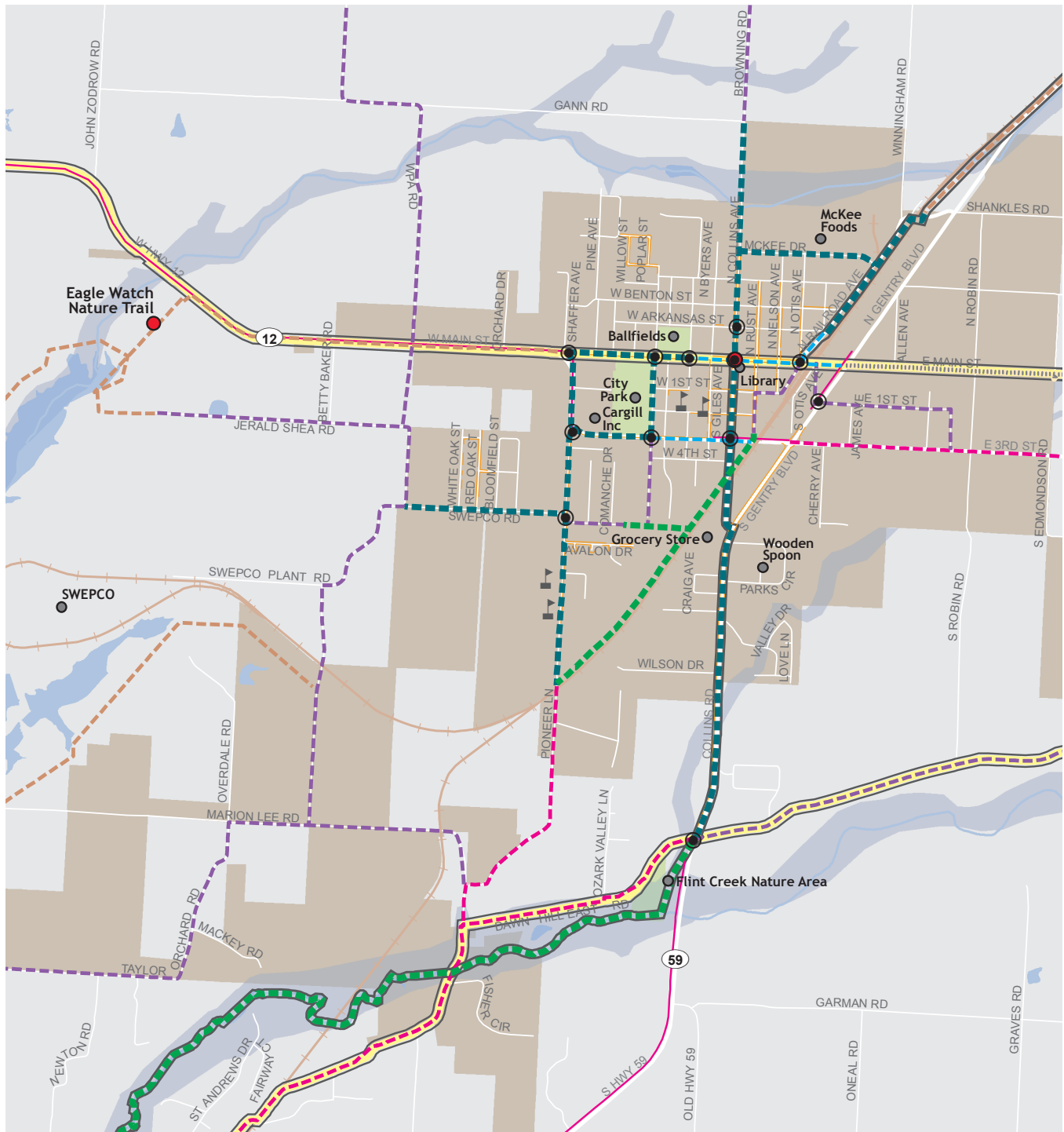


REGIONAL LOCATION MAP



Clockwise from upper left: Eagle Watch Nature Trail; Fall Fest at City Park; Downtown Gentry

MAP 6.11 GENTRY COMMUNITY PLAN



Key Needs & Recommendations for Gentry

| Topic | Key Needs & Notes |
|----------------------------------|--|
| <i>Regional Needs</i> | <ul style="list-style-type: none"> » Connect to Siloam Springs – 3.5 miles from developing Flint Creek Nature Area to Siloam Springs Lake. » Connect to Decatur. » Connect to urban NWA corridor. |
| <i>Other Key Needs</i> | <ul style="list-style-type: none"> » Need improved bicycle and pedestrian connections to Gentry High School. » Connect downtown businesses, connect to library. » Developed a draft plan for sidewalk/trail additions. » Connect large employers such as Cargill, Swepco, and McKee Foods. » Connect local parks and public space. |
| Facility Recommendation | Recommendation Detail |
| <i>Sidewalks</i> | <ul style="list-style-type: none"> » Elementary School and Middle School: Expand neighborhood sidewalk links to improve pedestrian connectivity. » Arkansas Street and ballfields: Link ballfields and northern downtown neighborhoods with downtown core. |
| <i>Intersections</i> | <ul style="list-style-type: none"> » Main Street: Crossing improvements needed for Main Street. Key intersections link downtown, the library, City Park, ballfields on Byers Avenue, and toward neighborhood schools. » Pioneer Lane: Improve Pioneer Lane crossings to connect schools. » Collins Avenue: Improve Collins Avenue crossings to link eastern/western halves of Gentry. » 3rd Street: Improve 3rd Street crossings to link southern section of Gentry and neighborhood schools. |
| <i>On-Street Bike Facilities</i> | <ul style="list-style-type: none"> » Separated Bikeway along Main Street: Link through downtown utilizing the existing width of Main Street, complementing existing wide sidewalks. » Separated Bikeway along 3rd Street: Provide link through key east/west corridor through south of downtown neighborhoods. Utilize existing street width, complementing sidewalks as feasible. » Separated Bikeway and Shared Roadway along Railroad Avenue: Connect rail with trail through Gentry's east downtown area. |
| <i>Shared Use Facilities</i> | <ul style="list-style-type: none"> » Sidepath – Pioneer Lane: Develop sidepath link along Pioneer Lane connecting the high school campus toward City Park and Downtown. » Sidepath – Collins Avenue and AR 59: Develop sidepath link along Collins Avenue and AR 59, linking the center of Gentry to the Flint Creek Nature Area and potential connections toward Siloam Springs. » Shared Use Paved Trail – Rail with trail: Develop rail with trail link along west side of rail line from Pioneer Lane toward downtown. » Shared Use Paved Trail – Flint Creek Nature Area to Siloam Springs Lake: Develop shared use paved trail along Flint Creek to connect toward Siloam Springs Lake and the City of Siloam Springs. |
| Other Topics | Notes |
| <i>Multi-Modal Connections</i> | <ul style="list-style-type: none"> » Gentry is not directly connected by public transit. Ozark Regional Transit serves the urban NWA corridor. |
| <i>Heritage Trail</i> | <ul style="list-style-type: none"> » The NWA Heritage Trail connects through the heart of Gentry along Main Street. To the south, the Heritage Trail follows Dawn Hill Road to Siloam Springs. From Main Street and Dawn Hill Road, the Heritage Trail extends east toward the urban NWA corridor. |

Program & Policy Recommendations

The table below presents a summary of recommendations organized by category which identifies the recommended program, time-frame for implementation, and lead entity. The table identifies Bronze (short-term), Silver (mid-term) and Gold (long-term) actions that can help achieve recognition as a Walk and Bicycle Friendly Community.

For many of these actions, there is an opportunity for the communities of the region to share resources, with individual communities participating in regional programs, attending trainings or meetings convened at the regional scale, or implementing regionally developed programs at the local level. Recommendations specific to the Six E's (Engineering, Education, Encouragement, Enforcement, and Evaluation (with Equity considered broadly through all)) are found below. Economy is included as an additional category to help demonstrate the benefits of implementing all of the E's. Refer to Appendix D for detailed guidance on implementing each item, including a description of recommended actions, regional and local roles, as well as sample programs.

| Program | Term | Lead Entity |
|--|--------|---|
| Engineering | | |
| Complete Streets Policy | Medium | City of Gentry |
| ADA Transition Plans | Medium | City of Gentry |
| Non-Motorized Transportation Training for Engineers and Planners | Short | NWARPC, City of Gentry |
| Bicycle Parking | Medium | NWARPC, Northwest Arkansas Council, City of Gentry |
| Enhanced Funding for Bike and Pedestrian Projects | Medium | NWARPC, City of Gentry |
| Bike/Pedestrian Facility Inclusion in Engineering Documents, Plans, and Drawings | Short | NWARPC, City of Gentry |
| Education | | |
| Safe Routes to School | Medium | City of Gentry |
| Network with existing capacity in NWA | Medium | City of Gentry City of Fayetteville, City of Bentonville, City of Rogers, City of Springdale, Bike Bentonville, BCO, IMBA |
| Encouragement | | |
| Walking and Biking Promotion Activities | Short | City of Gentry |
| Equity Oriented Programs | Short | NWARPC, Northwest Arkansas Council, City of Gentry |
| Bike and Walk Month | Medium | City of Gentry |
| Group Rides and Walks | Medium | City of Gentry |
| Enforcement | | |
| Targeted Bicycle and Pedestrian Enforcement | Short | City of Gentry Law Enforcement |
| Trainings for Law Enforcement Officers | Short | NWARPC, City of Gentry Law Enforcement |
| Bike and Foot Patrol Units | Medium | City of Gentry Law Enforcement |
| Annual Meeting with Police, Planners and Engineers to Evaluate Collision Trends, Infrastructure Needs and Areas for Targeted Enforcement | Medium | NWARPC, City of Gentry |
| Evaluation | | |
| Active Transportation Committee | Short | NWARPC, City of Gentry |
| Bicycle, Pedestrian, and Trail Count Program | Short | City of Gentry |
| Walking, Bicycling and Trails Report Card | Medium | City of Gentry |
| Economy | | |
| Bicycle and Walking Tourism Strategy | Medium | Northwest Arkansas Council, City of Gentry |