

RESOLUTION NO. 19-592

RESOLUTION AUTHORIZING THE MAYOR TO ACQUIRE EASEMENTS

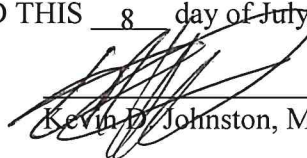
WHEREAS, the Arkansas Department of Transportation is constructing a roundabout at the intersection of State Highways 12 and 43, West of the City of Gentry, Arkansas;

WHEREAS, as part of that process, the City is required to re-route certain of its existing water and/or other utility lines;

WHEREAS, the City desires to authorize the Mayor to negotiate purchase agreements for the acquisition of utility easements from Ray and Bonnie Newton; Schwerin Farms, Inc.; and Larry and Glenda Manos, descriptions for which are attached hereto as Exhibits 1-3, respectively.

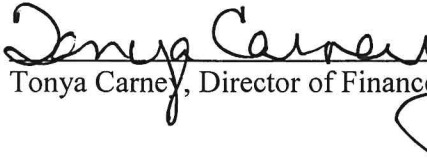
NOW THEREFORE BE IT RESOLVED by the City Council for the City of Gentry that the Mayor is hereby authorized to negotiate and enter into agreements securing the acquisition of easements from Ray and Bonnie Newton; Larry and Glenda Manos; and Schwerin Farms, Inc. The amount of consideration to be given for the said easements shall not exceed \$3.00/linear foot. The Mayor is further authorized to execute on behalf of the City of Gentry all related closing documents, contracts, deeds, and such other and further documents as may be required to complete and close such acquisitions.

PASSED, APPROVED AND ADOPTED THIS 8 day of July, 2019.



Kevin D. Johnston, Mayor

ATTEST:



Tonya Carney, Director of Finance



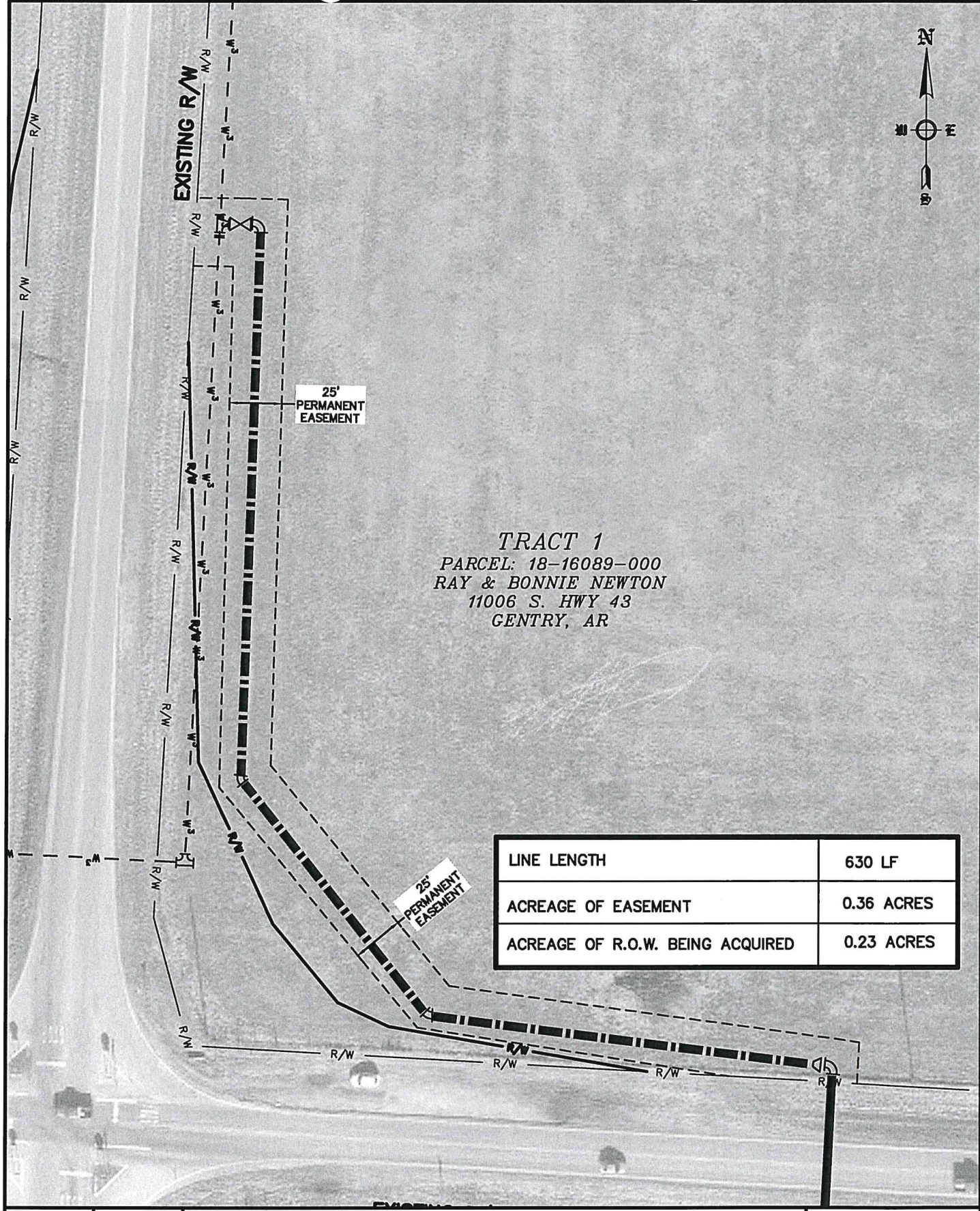
EXISTING R/W

25'
PERMANENT
EASEMENT

TRACT 1
PARCEL: 18-16089-000
RAY & BONNIE NEWTON
11006 S. HWY 43
GENTRY, AR

25'
PERMANENT
EASEMENT

LINE LENGTH	630 LF
ACREAGE OF EASEMENT	0.36 ACRES
ACREAGE OF R.O.W. BEING ACQUIRED	0.23 ACRES



EXHIBIT

1

SCALE: 1" = 60'

DATE: Nov 27, 2016

W.O. # 18809

EASEMENT EXHIBIT
HWY 12/HWY 43 WATER MAIN RELOCATIONS
GENTRY, ARKANSAS

ESI

ENGINEERING SERVICES INC.
1207 SOUTH OLD MISSOURI RD.
SPRINGDALE, ARKANSAS 72764

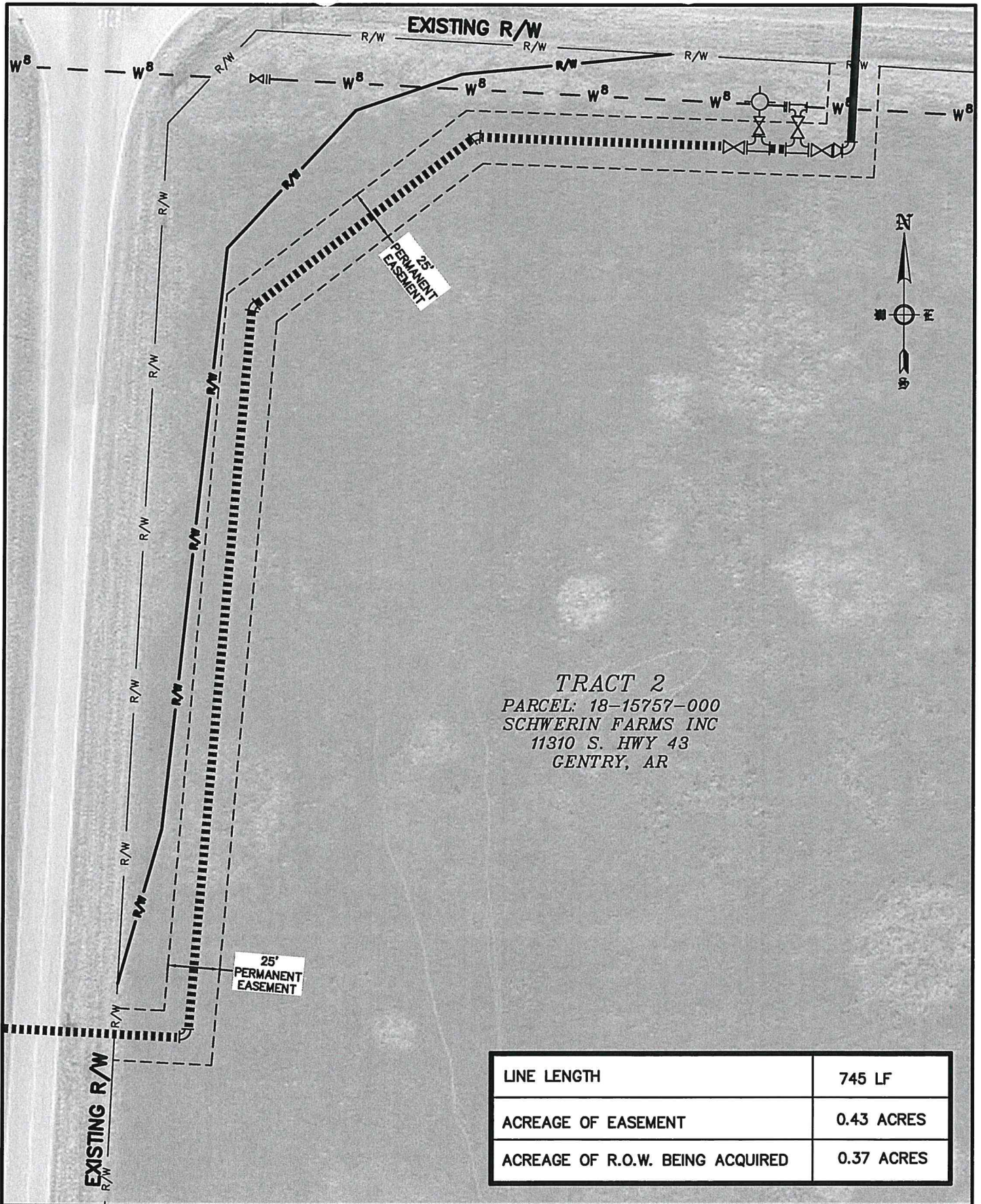
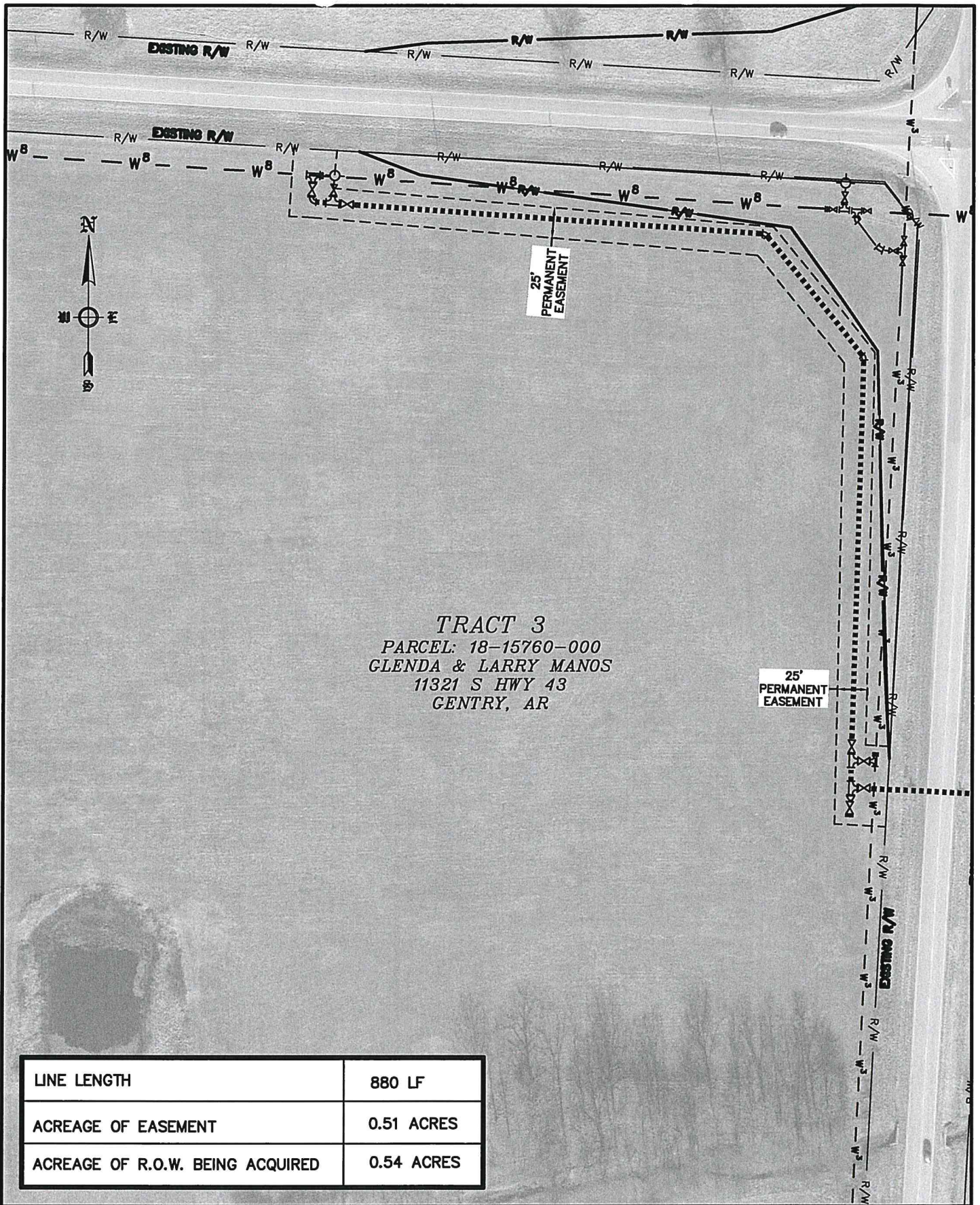


EXHIBIT
 2

SCALE: 1" = 60'
 DATE: Nov 27, 2018
 W.O. # 18809

EASEMENT EXHIBIT
HWY 12/HWY 43 WATER MAIN RELOCATIONS
GENTRY, ARKANSAS

ESI
 ENGINEERING SERVICES INC.
 1507 SOUTH OLD MISSOURI RD.
 SPRINGDALE, ARKANSAS 72764



LINE LENGTH	880 LF
ACREAGE OF EASEMENT	0.51 ACRES
ACREAGE OF R.O.W. BEING ACQUIRED	0.54 ACRES

EXHIBIT
3

SCALE: 1" = 100'
 DATE: Nov 27, 2016
 W.O. # 18809

EASEMENT EXHIBIT
HWY 12/HWY 43 WATER MAIN RELOCATIONS
GENTRY, ARKANSAS

ESI
 ENGINEERING SERVICES INC.
 1207 SOUTH OLD MISSISSIPPI RD.
 SPRINGDALE, ARKANSAS 72764